

COMMUNITY REDEVELOPMENT AGENCY

Leif J. Ahnell, Executive Director

The mission of the CRA is to advocate, administer the policies, and assist the public, downtown property owners and businesses in order to achieve the CRA Vision of the Downtown.

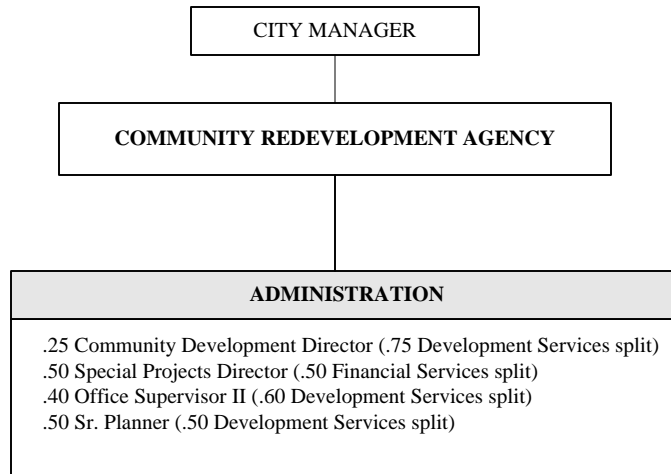
The organizational values of the CRA are to maximize the benefits of Downtown Redevelopment while minimizing cost through the integration and use of City staff.

The CRA Administration provides for the day-to-day operation of the Agency though the use of City staff from the Development Services Department. This includes the Agency office, all general administration, plan review services and the Agency's day-to-day dealings with the public, developers, the City and other governmental agencies.



DIVISION	APPROVED 2009-10 BUDGET
Administration	\$ 382,900
Mizner Park Revenue	16,465,000
Mizner Park Sinking	9,930,900
Mizner Park Lease Revenue	1,180,000
TOTAL	\$ 27,958,800

EXPENDITURE BY CATEGORY	ACTUAL 2008-09 BUDGET	APPROVED 2008-09 BUDGET	REVISED 2008-09 BUDGET	APPROVED 2009-10 BUDGET
Personal Services	163,549	183,000	183,000	190,000
Other Operating	86,859	177,200	187,400	2,664,700
Supplies	1,428	3,200	3,200	3,200
Transfers	7,517,098	7,849,700	7,849,700	8,062,000
Debt Service	6,551,743	6,551,300	6,551,300	6,538,800
Sub-Total	14,320,677	14,764,400	14,774,600	17,458,700
Reserves	10,070,277	11,674,400	11,674,400	10,500,100
TOTAL	24,390,954	26,438,800	26,449,000	27,958,800
Full-time Employees	1.65	1.65	1.65	1.65



Approved Positions FY 08/09	1.65
Revised Positions FY 08/09	-
Personnel Changes FY 09/10	-
Approved Positions FY 09/10	1.65